



PLANETEARTH

Chartered Landscape Architects

“Design must reflect the practical and
aesthetic in business but above all...
good design must primarily serve people.”

Thomas J Watson (1874-1956) - IBM Pioneer



“One touch of Nature makes the
whole world kin.”

William Shakespeare (1564-1616) – Poet and Playwright, from Troilus
and Cressida

PLANETEARTH

Planning & Design

Planet Earth Ltd (UK registered company number 03859212) was incorporated in 1999 with a vision to contribute to the health of planet and society, promoting harmonious social interaction through excellent design of inclusive, sustainable and ecological environments.

Art, ecology and human nature are integrated in Planet Earth's designs, creating balanced environments as living art to enrich the human senses.

Planet Earth Ltd is an award winning chartered landscape architecture consultancy for comprehensive design & planning across landscape typologies

We aim to provide unbeatable value and service to our clients and always deliver excellence as standard.

COMMERCIAL & INSTITUTION

p.10

Commercial & Residential development, Retail, Resorts, Hotels, Schools and Temples

PUBLIC REALM

p.18

Urban and extra-urban outdoor public space; Parks, streets, plazas, social developments, nature trails

GREEN/BLUE INFRASTRUCTURE

p.26

Vital multi-functional nature based infrastructure for the health and safeguarding of towns and cities

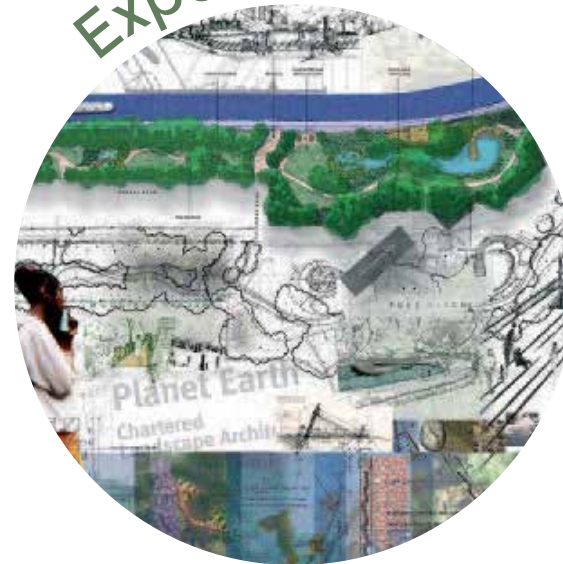
Communication



Understanding of stakeholder requirements, context and forecast is fundamental to our work. With a dedication to client and responsiveness to contextual positioning, Planet Earth Ltd strives only for excellence in service.

Expert skills across a range of techniques from traditional methods to cutting edge technologies are deployed in engagement with stakeholders during the creative journey to reveal the best possible outcomes.

Expertise



Professionalism



Expertise, experience and network of consultants ensure that comprehensive technical production, timely delivery and site-supervision consistently serve clients to the highest standards in bringing visions to life.

Our landscapes stimulate and enrich the senses, attract and encourage usage and socialization. They are sustainable living places that we believe make a small but meaningful contribution to the health of our shared planet.

Creativity



PLANETEARTH

Company philosophy

Green Infrastructure Landscape Planning Sustainable Urban Drainage Systems (SUDS) Integrating Human and Natural Systems



Green infrastructure integrates human and natural systems through a network of corridors and spaces in mixed-use and urban settings. Green infrastructure addresses problems such as pollution, climate risk, habitat, recreation, open space and urban form. Planet Earth uses information through urban ecology and ecosystem research, and plans or designs the space embedding both ecocentric and anthropocentric values into green infrastructure systems at various scales.

Sustainable Urban Drainage Systems (SUDS) are innovative and environmentally friendly techniques designed to manage water runoff in urban areas. They aim to mimic natural water management processes, reduce flood risk, and protect water quality while promoting sustainable urban development.

Planet Earth implement SUDS to play a vital role in creating sustainable and resilient cities, promoting efficient water management, enhancing biodiversity, and improving the overall quality of urban environments with schemes that are functional, beautiful, and provide amenity.

What We Do

- Constructed Wetland
- SUDS
- Animal Habitats Design
- Urban Green/Blue Spaces
- Rivers and Streams
- Green/Blue Roof Garden
- Countryside and Town Planning

Commercial & Institution

Planet Earth's expert design skills have over the years consistently contributed to the enduring success of many commercial and institutional developments and projects in the UK and China including retail and mixed commercial developments, hotels and resorts, residential developments and education and religious institutions.

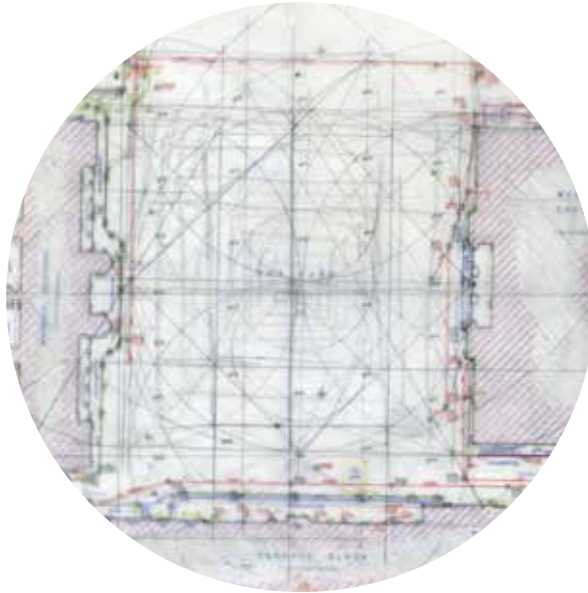
To each project undertaken, Planet Earth Ltd applies the utmost dedication to clients and stakeholders in striving to create the greatest possible landscape outcome.

Chelsea College of Art

Project case study

The Rootstein Hopkins Parade Ground at Millbank is London's largest open air art gallery, the 'Gallery without Walls'. An open exhibition space created for the University of the Arts London where artists showcase their work.

Planet Earth won a national design competition to create this £2m space funded by the Rootstein Hopkins Foundation.



The design divides the space into an asymmetrical geometric pattern according to 'golden ratio' measurements which reveal proportions and harmonies discovered in the design of the space and the surrounding buildings.

The geometric grid is defined by subtle straight and curved polished stainless steel lines and linear LEDs embedded into new granite sett paving. The grid is illuminated via a computer program in a variety of sections and sequences to create stunning evening effects and to assist artist in aligning and exhibiting their work.

The spatial harmonies allow the space to be easily appropriated by individuals and small works.



It was the design's unfussy simplicity and the way Planet Earth Ltd used their design skills to celebrate, not suffocate, the existing College buildings that attracted the judges attention.

Inclusivity is also a major part of the design eliminating the physical boundaries that not only define space but also inevitably act as a barrier to some visitors.

The design enhances the surrounding college buildings whilst offering maximum flexibility, as a working/leisure space featuring seating and a central turfed area, with 99 anchoring points inset within the grid that are used for marquees and other temporary structures and installations.



Jianshan Residential, Zhejiang

Reflecting the architectural style, a modern neo-classical landscape unfolds from the buildings.

Flanked by one river and intersected by another, the clean geometrical forms of the landscape give way to a more organic and naturalesque language. Integrated within the scheme are a series of unique enclosed gardens.



Peacebird Residential, An Hui

Planet Earth was engaged to develop the concept stage design for the landscape of this 15Ha Spanish colonial style themed residential development in An Hui. The result was a unique scheme that encouraged community and composed a mix of formal and informal spaces flavored with Spanish and north African Islamic garden influences.



Jinling Grand Hotel, Jiangsu

The sole five star hotel in Yanchun required a complete landscape overhaul along with its expansion, the erection of a new building. Planet Earth won the design tender with a highly comprehensive proposal that balanced a sustainable agenda with a clean luxurious high end design.



Mercy Hospital, Xuzhou

The landscaped grounds of this award-winning private hospital are influenced by the arts, architecture and gardens of the Italian late renaissance. Patients are transported to a welcoming environment of sensuous beauty and relaxation perfect for convalescence. Planet Earth also provide the design service for the revamped facades of the hospital buildings.





Sanqingshan Agriculture Resort, Jiangxi

Nestled in the valley folds beneath the magical peaks of the Natural World Heritage Site, Sanqing-shan; the agriculture resort provides visitors and guests with ample opportunity for local cultural themed play, education and entertainment enveloped in astonishingly rich natural ecology and an enlivened charming rusticity. Planet Earth was engaged by the client for stage 2 expansion and refit.



Luojiashan Retreat, Anji Zhejiang

Planet Earth conducted deep research and analysis in order to produce a highly sensitive and respectful proposal that won planning permission in the scenic area of Anji. The Buddhist retreat meanders up through a lush bamboo valley crowned with an ancient temple and holy spring.



St.Mary Churchyard Park

The renovation project of St. Mary's Church Park in London focuses on the space Syntax. As the core of London, Westminster district is connected with a large number of businesses and subways. The design optimizes the functional facilities and plant design on the basis of maintaining the estimation of the original church site. At the same time, a small rainwater garden is designed where the road connects with each other, it is also an education base for ecological protection.

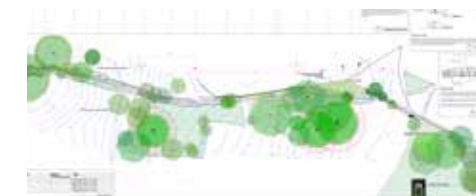


Stockwell School, London

Planet Earth organized a series of workshops for the school that in turn involved management, teachers, parents and children to help identify requirements, articulate wishes and to seed and develop ideas, themes and narratives. The resulting school landscape is one that genuinely relates to and stimulates the children on many levels.

Micheal Hall School, Sussex

Michael Hall School aims to support the growth of the child into a free thinking adult who can act with imagination, rigour and a sense of purpose in the modern world. It was a pleasure for Planet Earth to work with the school to create a series of play and exploratory spaces for the children at the longest running Steiner school.



Public Realm

In the streets and parks of London and across China, Planet Earth works to enhance the environment with the ethos that our environment has a deep effect on ourselves as individuals and society as a whole.

We are motivated by the opportunity and duty to help create engaging places that have a positive effect on everybody who experiences them, thus contributing to the local and greater global society.

Mint Street Park

Project case study

The park in South London was the site of a Tudor mint established by King Henry VIII around 1543. The mint however did not last long and the area degenerated. By the early 2000's a local group had formed to carry out improvements to the park, with emphasis on community in the face of increasing tourists and commercialization of the area.

Planet Earth Landscape Architects were appointed by the local authority Southwark to draw up and implement new designs and improvements for the park based on local consultation.



Planet Earth closely engaged with the local community to develop a meaningful scheme and continued to be a part of the Steering Group for the project after its implementation.

One of the radical ideas proposed by Planet Earth was that the gardening work should be undertaken by the homeless people using the park.

Other ideas included the integration of the park into the surrounding urban fabric, opening up views into the park, providing major new access points and a new route through the park named 'Blue Wall Alley' after a street which existed in the same location 500 years ago



The design of the park utilizes modern sustainable materials and is a highly flexible space.

Other major aspects of the plan were to include artworks within the design framework. The site of the historic Mint has been marked by a commemorative artwork of coins that was formed during an opening ceremony with local children, residents and the Mayor of Southwark.

The highly successful and popular park has won awards including the Landscape Institutes Community Award and has featured in multiple publications as a best practice example of local and community park design.



Community Centre

At the heart of the Wenjia community in Chengdu , is the well used service centre , square and park. The proposed design scheme responds to the environment and community: embodying Wenweng culture, not just symbolically but also literally; enabling and encouraging further cultivation and development of society and culture for the community



PUBLIC REALM

Selected Projects: Urban

Tanner Street, London

Planet Earth redesigned Tanner Street and Tanner Street Park involving the local community and school who continue to take part of the maintenance and programming. Complementing the clean and robust materials palette, textured planting provides dynamic colour throughout the year. Spatial forms tumble away from restive order creating delightful rhythms of function and a strong sense of place.



Zhongguan Mansion, Beijing

Mansion is located in the core area of Zhongguancun, which is also the core area of China's IT industry, surrounded by core high-tech enterprises. Mondrian's famous masterpiece "Broadway Jazz" elements appear in the garden design of Zhongguancun residence. It uses abstract composition to induce the viewer to think and reverie, and uses metaphor and symbolism to describe a leisurely and elegant

Wujiang Town Regeneration, Jiangsu

The works specified and overseen by Planet Earth for this town regeneration works included comprehensive street, road and accent lighting, coordinated shop signage, extensive highway planting and sculpture, pocket parks, repaving, street furniture and building re-cladding.





St Mary Frobisher Park, London

Planet Earth encouraged local community involvement with the park design in the early concept stages by organizing a festival event and design workshops.

The well loved play park immerses children into a world of active play and imagination, of fantastical legends. Features include the slumbering 'Giant of Peckham', sustainable urban drainage systems and locally reclaimed materials.



Meanwhile Gardens, London

Meanwhile Gardens were established in 1976 as community gardens and included London's first skateboard bowl, for which the park became well known. Planet Earth Ltd was assigned to carry out redesign and applied a theory of 'multiplicity within unity'.

The (re)design focused on human scale spatiality and details. Elements are composed on flexible systems and repeated motifs, a sequence of fragments are united along a unifying 'golden thread' spinal path.



Orange Park, London

Orange park is another unique and fantastical community play park found in London designed by Planet Earth, where a fairytale journey unfolds and undulates.

The park has been widely published used as a case study exemplar for creative integration of sustainable urban drainage systems and play.

Culture Heritage Park, Chongqing

The project is the former site of Archibald John Little's house and warehouse. In 1891, Chongqing was opened as a port, and it happened here. Later the site was used as the National Parties HQ and the Shell company HQ, but was eventually abandoned and became derelict. Today the site is a case study for successful urban regeneration.



Standing on the veranda of the building, you can directly view the river scenery. The landscape maintains the original site conditions, combines with the local characteristics of Chongqing, and reflects the style of English garden, so that tourists can feel as if they are passing through the ancient and modern times.

Green/Blue Infrastructure

Planet Earth Ltd is experienced in the innovative optimizing of multi-functional Eco-engineered infrastructure, increasingly recognized for its importance and centrality to many towns and cities.

As integrated systems, green and blue water infrastructure can help clean the environment, reduce runoff, increase biodiversity, and offer cultural/health and economic benefits through public access to valued natural resources. Furthermore, they may be optimized and integrated with the wider surroundings to provide exceptional public resources and add vast value to development.

Xiangshan East

Project case study

North east of the Zhejiang coastal town Xiangshan, Xiangshan East Bay (approximately 7km²) was diked from the sea and since the 1970's mostly used for shrimp farming.

More recently plans were made to develop the area into an industrial park mixed with residential developments and other supporting amenities. Planet Earth was tasked to design the public riverside landscape functioning to attract and serve settlement, totaling 60 Hectares, which sweeps around and through the new development zone.



Planet Earth developed a brief to transform the newly dug rivers into highly attractive destinations. One major challenge, or creative opportunity, was the remarkably low construction budget allocated to the landscape.

A strategy was devised which focused on forming ecological habitats and environmental purification systems, and integrating these with amenity and other utilitarian functions with a strong identity to create a comprehensive landscape which people would hopefully desire to be a part of; a new regional eco-amenity landscape which embraces the entire zone and offers an abundance of varied spaces.

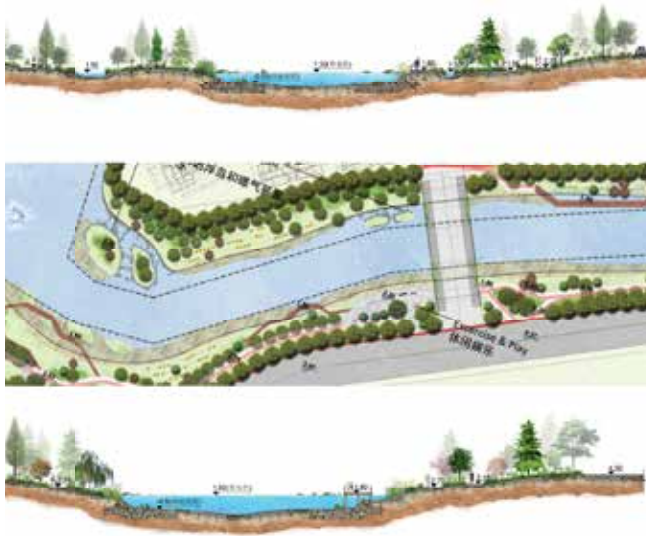


The resulting landscape utilizes innovative planting and access techniques promoting interaction with the natural environment.

Dense tree planting based on matrices derived from the surrounding outcrops creates an ecological carbon sink; undulating woodland on bunds and mounding that buffers the site is peppered with intimate lawn and flower spaces to explore. A rich environment, expansive with multitudes of human scale spaces within, was successfully achieved within a remarkably low budget.



GREEN/BLUE
INFRASTRUCTURE



In partnership with the LDI, Planet Earth won the tender to design and detail the river with a proposal that added an additional requirement to the brief; habitat creation for wildlife.

Other challenges of the project included very soft unstable ground, a result of the reclamation and strict flood capacity volumes. Extensive pine log piling and gabions with local stone with site material backfill were deployed as flexible carbon positive supporting structure.

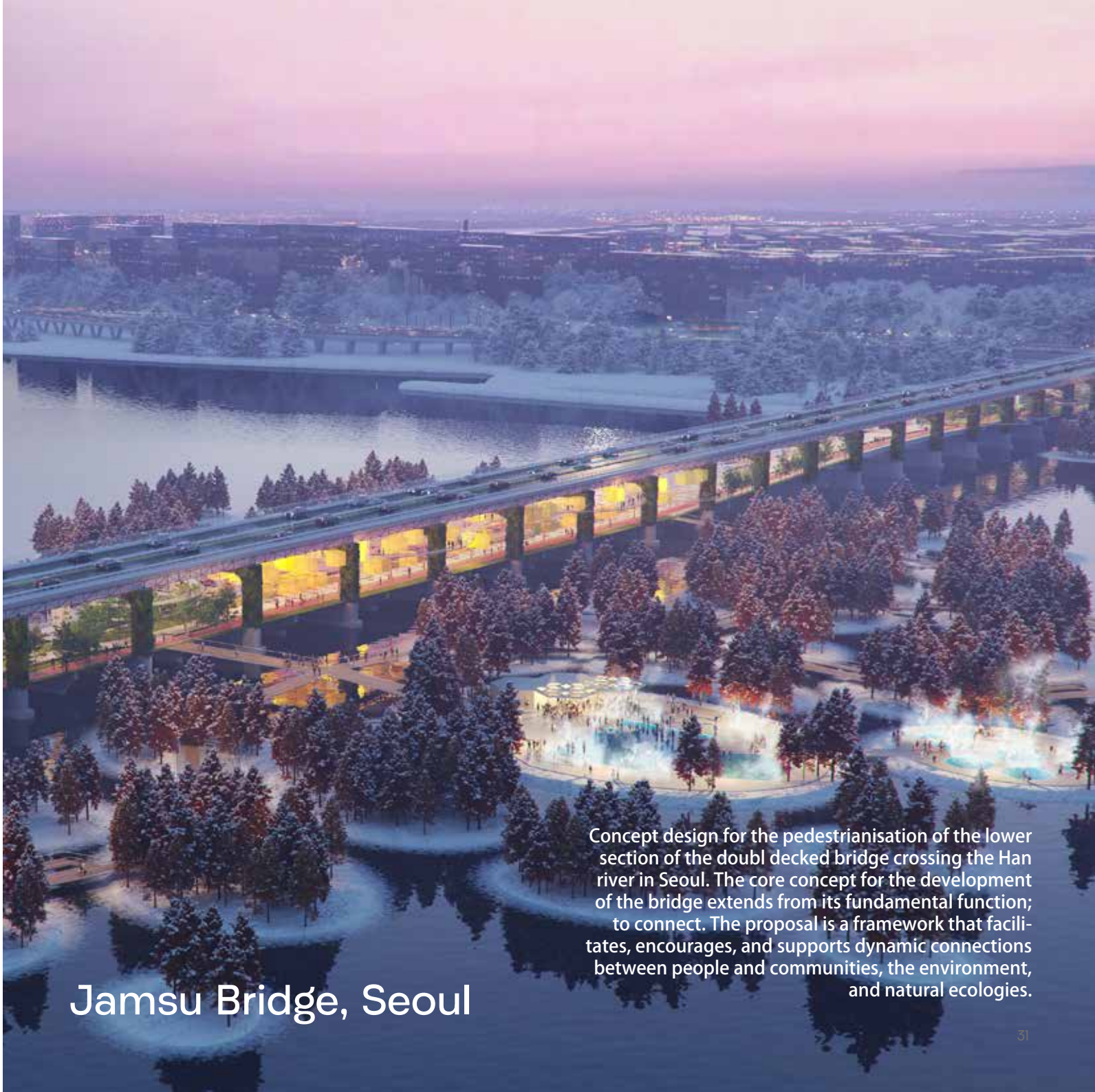
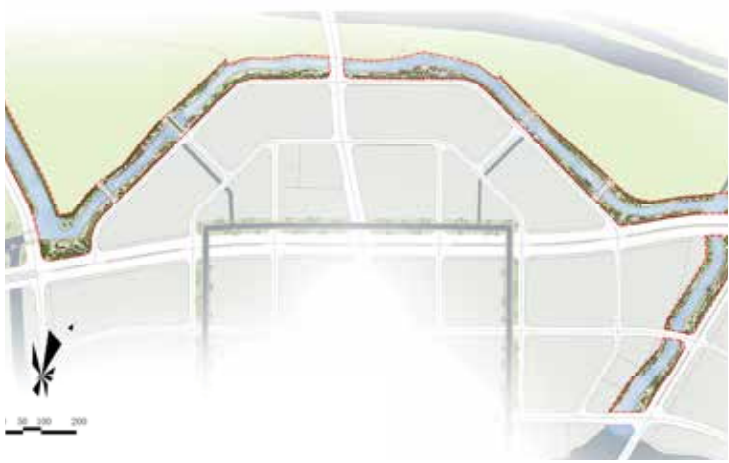
The spatial layout and design language was implemented as a conversational integration between ecological habit and user amenity, where rhythms of usable space defined by natural habitat emerge organically and vice versa.

Selected Projects

Da Mu Wan, Zhejiang

DaMuWan, or Big Eye Bay, new town currently under construction sits in the central position of the Xiangshan '100mile Golden Beach'.

Built upon reclaimed land interfacing Xiangshan valley and town with the coast, the new 4km river system was required by the planners as part of the wider water system to safely conduit the valley water runoff through and around the new town, help purify the water entering the bay, provide residents and visitors amenity space and cross town circulation cycle paths.



Jamsil Bridge, Seoul

Concept design for the pedestrianisation of the lower section of the double decked bridge crossing the Han river in Seoul. The core concept for the development of the bridge extends from its fundamental function; to connect. The proposal is a framework that facilitates, encourages, and supports dynamic connections between people and communities, the environment, and natural ecologies.



contact@planet-earth.co.uk
www.planet-earth.co.uk